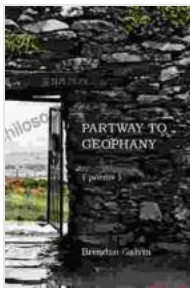


Partway to Geophany: Brendan Galvin's Sublime Exploration of the Human Condition

Brendan Galvin's "Partway to Geophany" is a profound collection of poems that explores the multifaceted nature of the human condition and our relentless pursuit of meaning. Through evocative imagery and a masterful use of poetic techniques, Galvin delves into themes of impermanence, longing, and the search for transcendent experiences.



Partway to Geophany: Poems by Brendan Galvin

★★★★★ 5 out of 5

Language : English
File size : 1733 KB
Text-to-Speech : Enabled
Screen Reader : Supported
Enhanced typesetting: Enabled
Print length : 108 pages



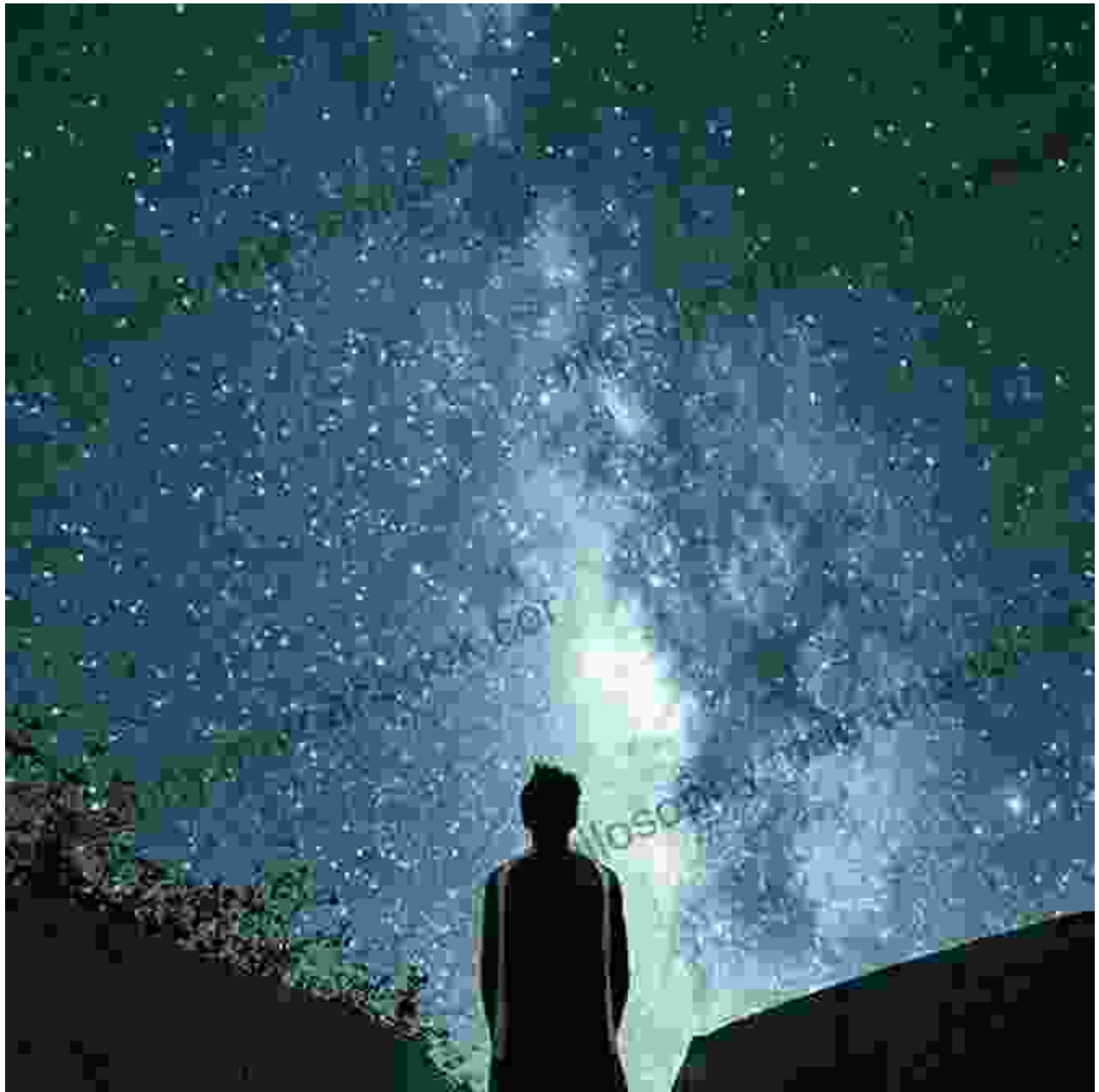
Themes

Transience and Mortality



Galvin's poems are imbued with a keen awareness of the fleeting nature of life. In "The Moth," for instance, he writes, "Our days are short, a moth's flight across the dark," capturing the ephemeral quality of human existence. Through vivid descriptions of natural cycles and the passing of time, Galvin confronts us with the inevitability of death and the fragility of our hold on life.

Longing and Yearning



A deep sense of longing permeates "Partway to Geophany." Galvin's poems express a yearning for something beyond the mundane, for experiences that transcend the limitations of the everyday. In "Towards Geophany," he writes, "I hear a whisper in the wind, a music of the spheres," hinting at the possibility of a profound connection with the universe.

The Search for Transcendence



Galvin's poetry explores the human desire for transcendence and the elusive nature of spiritual experiences. In "The Geophany," he writes, "I stand on the precipice of a new beginning, where the cosmic and the human meet." Through vivid imagery of nature and moments of introspection, Galvin invites us to contemplate the possibility of mystical encounters that connect us to a higher realm.

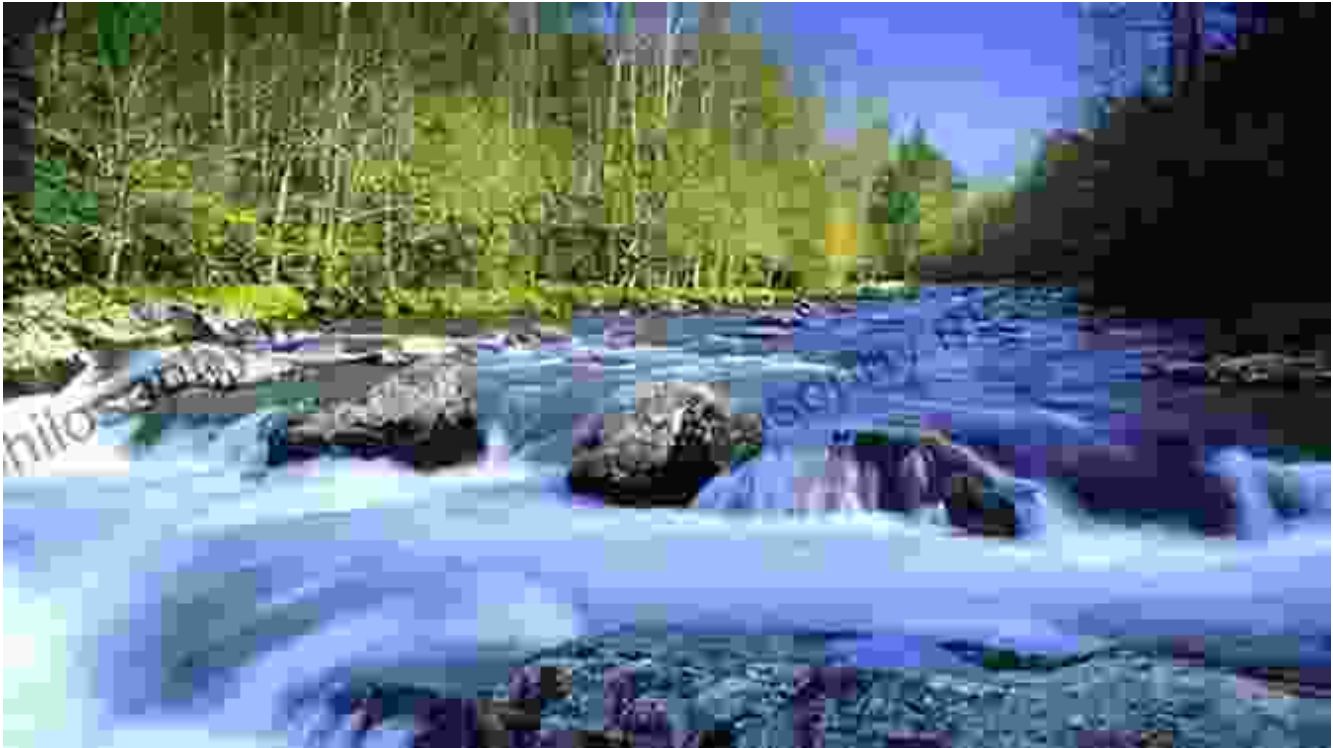
Imagery

Nature as a Reflection of the Human Condition

Galvin frequently uses nature as a mirror to reflect the inner workings of the human psyche. In "The Storm," he compares the fury of a tempest to the

turmoil within his own soul. By associating human emotions with the forces of nature, Galvin creates a visceral and relatable experience for the reader.

Water as a Symbol of Life and Renewal



Water holds a significant symbolic meaning throughout "Partway to Geophany." Rivers, lakes, and oceans represent the fluidity of life, the ebb and flow of emotions, and the potential for transformation. In "The River," Galvin writes, "I walk along the river's bank, and it speaks to me of my own journey, of the currents that carry me forward, the obstacles that I must overcome." Water becomes a metaphor for the journey of self-discovery and the constant renewal that is inherent in life.

Light as a Symbol of Hope and Transcendence



Galvin often uses the imagery of light to evoke a sense of hope and the possibility of transcending the limitations of the physical world. In "The Dawn," he writes, "The darkness fades, and a new day dawns, a promise of renewal and the possibility of a new beginning." Light becomes a metaphor for the transformative power of the human spirit and the potential for spiritual growth.

Poetic Techniques

Metaphor and Simile

Galvin employs metaphors and similes to create vivid and memorable images. In "The Tree of Life," he writes, "My heart is like a tree, its roots deep in the earth, its branches reaching for the sky." By comparing the

heart to a tree, Galvin evokes a profound sense of interconnectedness between the human and the natural world.

Anaphora and Repetition

Galvin uses anaphora (the repetition of a phrase at the beginning of successive lines) and repetition to create a sense of rhythm and emphasize key themes. In "The Path," he writes, "I walk through the forest, I walk through the mountains, I walk through the darkness towards the light." The repetition of "I walk" underscores the journey motif and the relentless pursuit of a meaningful destination.

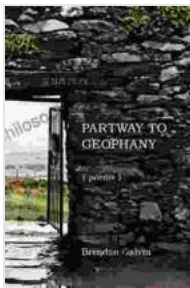
Symbolism



Galvin's poetry is rich in symbolism. Objects, animals, and natural phenomena often carry deeper meanings and allegorical significance. In "The Labyrinth," for instance, the labyrinth symbolizes the complexities of

life's journey and the search for enlightenment. Through the use of symbols, Galvin invites the reader to contemplate the deeper meanings hidden within the everyday.

Brendan Galvin's "Partway to Geophany" is a lyrical masterpiece that explores the depths of the human condition and our eternal search for meaning. Through evocative imagery, powerful poetic techniques, and profound themes, Galvin invites us to confront our mortality, embrace our yearning for transcendence, and contemplate the enigmatic nature of reality. "Partway to Geophany" is a collection that resonates deeply within the human soul, leaving us with a sense of both wonder and the enduring power of the human spirit.

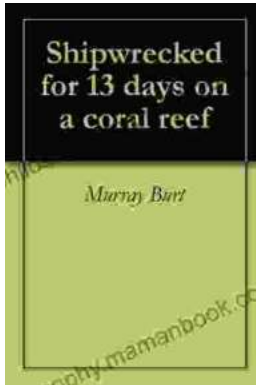


Partway to Geophany: Poems by Brendan Galvin

★★★★★ 5 out of 5

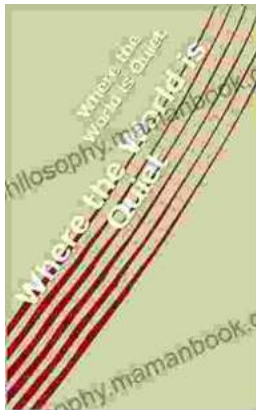
Language : English
File size : 1733 KB
Text-to-Speech : Enabled
Screen Reader : Supported
Enhanced typesetting : Enabled
Print length : 108 pages





Shipwrecked For 13 Days On Coral Reef: A Tale of Survival and Resilience

In the vast expanse of the Pacific Ocean, where towering waves crashed against the unforgiving coastline, a tale of unimaginable survival unfolded. A group...



Where the World Is Quiet: Delving into a Realm of Serene Sonority

A Tapestry of Serenity In the tapestry of life, where vibrant hues and muted whispers intertwine, there exist pockets of tranquility—oases where the restless...